

ШКОЛЬНИКАМ И ВЗРОСЛЫМ

О ТРЕНАЖЁРЕ

Если человек хочет добиться успехов в спорте, он усиленно тренируется. Точно так же обстоят дела и с математикой. В спорте сильный и целеустремлённый атлет награждается медалью, ценным призом и чемпионским титулом. А что же получает в награду человек, в совершенстве овладевший всеми приёмами математики? Во-первых, ему не страшны самые сложные задачи, и в уме он сосчитает быстрее, чем если бы нажимал на кнопки калькулятора. А во-вторых, ему торжественно вручается Диплом знатока математики.

КАК С НИМ РАБОТАТЬ

Тренажёр содержит задания, предусмотренные курсом математики для учащихся 4 класса. Это повторение материала 3 класса, а также примеры на сложение и вычитание, умножение и деление четырёх-, пяти- и шестизначных чисел. Для того чтобы школьник мог довести навыки счёта до автоматизма и надёжно закрепить их, ему предлагается решать примеры на скорость. Степень усвоения материала оценивается по двум критериям: времени, затрачиваемому на решение, и количеству ошибок.

Все задания сгруппированы в стандартные блоки. В каждом из них ученику нужно выполнить короткую, среднюю и длинную серию примеров, выстроенных в столбики различной длины. Они носят названия «Спринт», «Средняя дистанция» и «Марафон». Перед началом решения каждого столбика нужно засечь время, а по окончании — записать, сколько прошло минут и секунд. После этого проверяются ответы. Если были допущены ошибки, их количество также записывается.



ОБРАБОТКА РЕЗУЛЬТАТОВ

Чтобы узнать, сколько времени требуется на решение одного примера, количество секунд делится на количество примеров в столбике. В первом разделе примеры относительно несложные. Если ребёнок решает пример быстрее чем за 5 секунд, значит, он отлично

усвоил тему. Результат в интервале 5–7 секунд — это тоже неплохо. Но если на решение одного примера уходит больше 7 секунд, ученику следует поднажать на математику и быть более собранным во время выполнения заданий.

Допустим, ученик решил столбик из 13 примеров в блоке «Спринт» за 1 минуту 5 секунд. Делим секунды на количество примеров:

$$65 : 13 = 5 \text{ с}$$

Таким образом, один пример решается ровно за 5 секунд. Это хорошая скорость, но можно решать и быстрее.

Во втором разделе примеры усложняются. Соответственно увеличивается и время решения. Здесь отличным будет считаться результат в 15 секунд.

Однако в погоне за скоростью не следует забывать об ошибках. Ученику нужно стремиться к тому, чтобы в графе «Ошибки» всегда красовалась цифра 0, а в графе «Время» цифра неуклонно снижалась от блока к блоку, от страницы к странице.

ЛЁГКАЯ РАЗМИНКА

Любой спортсмен хорошо знает, что такое усталость. И на тренировках, и на соревнованиях он тратит очень много энергии. Спортсмен должен уметь давать себе отдых и расслабляться для восстановления сил. Однако это не значит, что он должен просто сидеть или лежать неподвижно. Опытный спортсмен сочетает отдых с лёгкими разминочными упражнениями. Поэтому между «Средней дистанцией» и «Марафоном» школьнику, уже несколько уставшему от решения примеров, тоже предлагается разминка — забавные головоломки, ребусы, загадочные рисунки и другие задания. Предусмотрена также разминка «с увеличенной нагрузкой». Такое переключение позволит одолеть долгую марафонскую дистанцию.

НАГРАДА

В конце каждого раздела помещён бланк Диплома знатока математики. В него школьник должен вписать имя и фамилию, а также свои лучшие результаты в «Спринте», «Средней дистанции» и «Марафоне».

Итак, приготовьте секундомеры!

На старт... Внимание... Марш!



ЧИСЛА ДО 1000

СПРИНТ

$$\begin{aligned}34 : 2 = \\76 : 2 = \\17 \cdot 5 = \\87 : 3 = \\92 - 52 = \\21 + 63 = \\68 : 4 = \\6 \cdot 10 = \\4 \cdot 21 = \\16 \cdot 4 = \\87 + 28 = \\7 + 84 = \\35 + 46 =\end{aligned}$$



$$\begin{aligned}6 \cdot 9 = \\7 \cdot 12 = \\78 + 19 = \\52 : 2 = \\4 \cdot 22 = \\48 : 4 = \\74 - 11 = \\7 \cdot 7 = \\39 + 50 = \\68 : 2 = \\44 + 36 = \\99 - 60 = \\33 : 3 =\end{aligned}$$



$$\begin{aligned}51 : 3 = \\84 : 2 = \\10 + 71 = \\40 + 45 = \\27 + 50 = \\28 + 29 = \\9 \cdot 11 = \\33 : 3 = \\36 + 22 = \\65 - 16 = \\4 \cdot 21 = \\53 - 27 = \\35 + 35 =\end{aligned}$$



$$\begin{aligned}26 : 2 = \\8 \cdot 8 = \\100 - 6 = \\8 \cdot 6 = \\81 - 75 = \\6 \cdot 11 = \\6 \cdot 12 = \\24 : 2 = \\95 : 5 = \\47 + 49 = \\3 \cdot 16 = \\48 : 4 = \\66 + 14 =\end{aligned}$$



$$\begin{aligned}90 : 2 = \\96 - 20 = \\74 : 2 = \\4 \cdot 24 = \\84 - 37 = \\83 + 8 = \\60 : 6 = \\14 \cdot 4 = \\36 + 82 = \\56 - 14 = \\37 + 48 = \\44 + 50 = \\37 + 58 =\end{aligned}$$



СРЕДНЯЯ ДИСТАНЦИЯ

$$\begin{aligned}62 : 2 = \\20 + 77 = \\9 \cdot 8 = \\20 + 69 = \\40 : 2 = \\80 - 22 = \\38 + 47 = \\85 - 24 = \\100 - 90 = \\96 : 8 = \\99 - 21 = \\56 - 34 = \\23 \cdot 3 = \\52 - 14 = \\9 \cdot 6 = \\5 \cdot 13 = \\5 \cdot 10 = \\3 \cdot 20 = \\30 + 55 = \\4 \cdot 22 = \\32 : 2 = \\94 : 2 = \\8 \cdot 7 = \\75 - 23 = \\11 \cdot 6 = \\7 \cdot 10 = \\38 : 2 = \\22 \cdot 4 = \\100 - 72 = \\84 - 19 = \\21 \cdot 4 =\end{aligned}$$



$$\begin{aligned}30 + 39 = \\49 + 27 = \\50 - 16 = \\78 : 2 = \\61 + 32 = \\73 - 29 = \\39 + 43 = \\11 \cdot 7 = \\48 + 46 = \\7 \cdot 9 = \\72 : 6 = \\50 : 5 = \\66 : 3 = \\82 - 59 = \\9 \cdot 6 = \\32 + 68 = \\8 \cdot 11 = \\67 + 52 = \\32 : 2 = \\51 + 27 = \\58 : 2 = \\30 : 3 = \\36 + 51 = \\76 - 16 = \\54 : 2 = \\94 - 46 = \\32 : 2 = \\73 - 49 = \\11 \cdot 8 = \\95 - 13 = \\5 + 68 =\end{aligned}$$



$$\begin{aligned}64 - 16 = \\23 \cdot 3 = \\39 : 3 = \\100 - 64 = \\36 : 3 = \\81 : 3 = \\52 : 2 = \\92 - 23 = \\71 + 27 = \\8 \cdot 9 = \\4 \cdot 3 = \\76 - 44 = \\46 : 2 = \\10 \cdot 7 = \\10 \cdot 6 = \\85 : 5 = \\52 + 26 = \\31 + 48 = \\85 : 5 = \\30 : 2 = \\75 - 14 = \\90 : 5 = \\6 \cdot 10 = \\82 - 42 = \\6 \cdot 14 = \\44 : 2 = \\11 \cdot 6 = \\74 - 28 = \\97 - 77 = \\41 + 34 = \\89 - 12 =\end{aligned}$$



$$\begin{aligned}74 - 33 = \\99 - 27 = \\44 + 16 = \\88 + 5 = \\6 \cdot 9 = \\41 + 33 = \\8 \cdot 7 = \\43 + 80 = \\6 \cdot 8 = \\4 \cdot 20 = \\68 - 31 = \\24 : 2 = \\69 : 3 = \\72 - 22 = \\6 \cdot 11 = \\30 + 42 = \\9 \cdot 6 = \\45 + 51 = \\11 \cdot 5 = \\45 : 3 = \\68 - 24 = \\75 + 23 = \\70 : 2 = \\6 \cdot 9 = \\27 + 61 = \\94 : 2 = \\94 : 2 = \\4 \cdot 13 = \\90 - 20 = \\64 : 2 = \\10 \cdot 6 =\end{aligned}$$



$$\begin{aligned}75 - 28 = \\74 - 48 = \\48 + 37 = \\22 + 67 = \\16 + 69 = \\19 + 62 = \\10 \cdot 9 = \\28 + 46 = \\15 + 56 = \\69 - 26 = \\30 : 2 = \\34 : 2 = \\51 + 30 = \\44 : 4 = \\15 \cdot 5 = \\69 - 44 = \\92 - 62 = \\85 - 36 = \\6 \cdot 9 = \\50 - 10 = \\9 \cdot 7 = \\5 \cdot 19 = \\60 : 5 = \\13 \cdot 5 = \\100 - 71 = \\89 - 51 = \\90 - 51 = \\95 - 66 = \\15 \cdot 5 = \\86 - 44 = \\9 \cdot 11 =\end{aligned}$$



Реши примеры и соедини их с ответами. Узнай, кто за каким деревом хочет спрятаться.



$125 + 543 =$



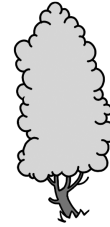
$984 - 358 =$



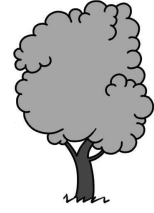
$212 \cdot 3 =$



636



626



668

МАРАФОН

- | | | | | |
|----------------|-----------------|-----------------|----------------|----------------|
| $2 \cdot 37 =$ | $79 - 64 =$ | $70 - 18 =$ | $28 : 2 =$ | $31 + 57 =$ |
| $50 + 37 =$ | $98 - 16 =$ | $57 + 32 =$ | $20 + 64 =$ | $5 \cdot 19 =$ |
| $82 - 29 =$ | $99 - 37 =$ | $79 - 60 =$ | $15 + 35 =$ | $28 + 47 =$ |
| $54 + 20 =$ | $4 \cdot 16 =$ | $45 : 3 =$ | $67 + 11 =$ | $46 : 2 =$ |
| $5 \cdot 10 =$ | $78 : 6 =$ | $16 + 80 =$ | $78 - 10 =$ | $66 : 3 =$ |
| $5 \cdot 11 =$ | $6 \cdot 14 =$ | $100 - 2 =$ | $6 \cdot 8 =$ | $13 + 31 =$ |
| $74 : 2 =$ | $25 + 43 =$ | $4 \cdot 15 =$ | $95 - 32 =$ | $36 + 62 =$ |
| $49 - 30 =$ | $9 \cdot 6 =$ | $88 : 8 =$ | $79 - 36 =$ | $83 - 48 =$ |
| $64 : 2 =$ | $84 - 21 =$ | $10 \cdot 10 =$ | $46 + 27 =$ | $64 - 35 =$ |
| $7 \cdot 8 =$ | $85 - 61 =$ | $6 \cdot 10 =$ | $70 : 5 =$ | $92 - 44 =$ |
| $65 - 58 =$ | $18 + 44 =$ | $87 : 3 =$ | $12 \cdot 7 =$ | $65 - 57 =$ |
| $64 - 27 =$ | $82 - 48 =$ | $44 : 4 =$ | $30 : 2 =$ | $82 : 2 =$ |
| $76 : 4 =$ | $96 - 81 =$ | $48 + 29 =$ | $35 + 23 =$ | $58 - 23 =$ |
| $75 : 5 =$ | $92 : 2 =$ | $88 : 2 =$ | $79 - 6 =$ | $73 - 24 =$ |
| $55 + 43 =$ | $71 - 10 =$ | $82 - 36 =$ | $35 + 66 =$ | $80 : 5 =$ |
| $72 : 4 =$ | $93 : 3 =$ | $67 - 53 =$ | $77 - 57 =$ | $79 - 23 =$ |
| $3 \cdot 22 =$ | $68 + 11 =$ | $88 : 8 =$ | $55 : 5 =$ | $65 : 5 =$ |
| $12 \cdot 6 =$ | $8 \cdot 9 =$ | $94 - 65 =$ | $46 + 35 =$ | $94 - 72 =$ |
| $63 : 3 =$ | $59 + 13 =$ | $94 - 68 =$ | $81 : 3 =$ | $100 : 10 =$ |
| $96 - 76 =$ | $10 \cdot 10 =$ | $42 + 31 =$ | $68 : 2 =$ | $36 : 2 =$ |
| $81 - 18 =$ | $7 \cdot 8 =$ | $48 + 33 =$ | $52 : 4 =$ | $46 + 19 =$ |
| $11 \cdot 8 =$ | $13 + 57 =$ | $49 + 41 =$ | $86 : 2 =$ | $26 \cdot 2 =$ |
| $4 \cdot 22 =$ | $75 - 46 =$ | $45 + 41 =$ | $96 - 44 =$ | $85 : 5 =$ |
| $52 : 2 =$ | $60 - 20 =$ | $61 + 28 =$ | $7 \cdot 12 =$ | $78 : 6 =$ |
| $63 : 3 =$ | $87 - 28 =$ | $46 + 28 =$ | $22 : 2 =$ | $12 \cdot 7 =$ |
| $31 \cdot 2 =$ | $9 \cdot 11 =$ | $43 - 11 =$ | $9 \cdot 10 =$ | $30 : 2 =$ |
| $74 + 10 =$ | $82 - 10 =$ | $85 + 10 =$ | $41 + 37 =$ | $96 : 6 =$ |
| $75 + 18 =$ | $53 - 25 =$ | $63 : 3 =$ | $47 + 17 =$ | $16 \cdot 3 =$ |
| $8 \cdot 8 =$ | $62 : 2 =$ | $64 : 2 =$ | $64 + 15 =$ | $8 \cdot 8 =$ |
| $95 : 5 =$ | $46 : 2 =$ | $28 : 2 =$ | $6 \cdot 11 =$ | $32 + 62 =$ |
| $14 \cdot 4 =$ | $82 : 2 =$ | $7 \cdot 9 =$ | $78 - 62 =$ | $95 : 5 =$ |
| $99 : 3 =$ | $24 : 2 =$ | $54 - 15 =$ | $96 - 58 =$ | $7 \cdot 11 =$ |
| $66 + 27 =$ | $10 \cdot 8 =$ | $60 : 5 =$ | $58 : 2 =$ | $57 + 39 =$ |
| $11 \cdot 9 =$ | $34 + 35 =$ | $40 + 34 =$ | $87 - 72 =$ | $93 - 49 =$ |
| $5 \cdot 10 =$ | $11 \cdot 8 =$ | $8 \cdot 10 =$ | $92 + 5 =$ | $4 \cdot 20 =$ |
| $41 + 50 =$ | $27 + 37 =$ | $32 : 2 =$ | $51 : 3 =$ | $47 + 27 =$ |
| $72 + 23 =$ | $78 - 16 =$ | $95 : 5 =$ | $55 : 5 =$ | $88 : 2 =$ |
| $10 + 48 =$ | $39 + 23 =$ | $49 + 46 =$ | $19 \cdot 4 =$ | $5 \cdot 10 =$ |
| $35 + 65 =$ | $51 + 33 =$ | $72 : 2 =$ | $19 \cdot 5 =$ | $52 : 2 =$ |
| $60 : 4 =$ | $86 : 2 =$ | $49 - 30 =$ | $77 : 7 =$ | $30 : 3 =$ |
| $86 : 2 =$ | $96 - 39 =$ | $5 \cdot 12 =$ | $56 + 28 =$ | $92 : 2 =$ |
| $85 : 5 =$ | $45 + 29 =$ | $37 + 38 =$ | $45 : 3 =$ | $90 : 2 =$ |
| $51 + 26 =$ | $29 + 49 =$ | $82 : 2 =$ | $79 - 30 =$ | $6 \cdot 12 =$ |
| $6 \cdot 9 =$ | $64 : 4 =$ | $44 : 4 =$ | $61 - 36 =$ | $28 + 31 =$ |



СПРИНТ

$$\begin{aligned}37 + 73 &= \\113 - 35 &= \\116 : 2 &= \\125 : 5 &= \\98 - 31 &= \\126 : 6 &= \\74 + 72 &= \\18 \cdot 6 &= \\41 + 108 &= \\45 : 3 &= \\92 - 53 &= \\109 - 86 &= \\10 \cdot 10 &= \end{aligned}$$



$$\begin{aligned}64 + 58 &= \\127 - 87 &= \\121 : 11 &= \\145 - 74 &= \\72 : 6 &= \\108 + 38 &= \\81 : 3 &= \\65 + 62 &= \\90 - 56 &= \\20 : 2 &= \\41 + 81 &= \\90 - 74 &= \\46 - 23 &= \end{aligned}$$



$$\begin{aligned}36 : 3 &= \\8 \cdot 14 &= \\70 - 42 &= \\58 : 2 &= \\32 : 2 &= \\123 - 33 &= \\18 \cdot 5 &= \\76 + 46 &= \\150 - 101 &= \\8 \cdot 13 &= \\63 : 3 &= \\92 - 26 &= \\119 - 93 &= \end{aligned}$$



$$\begin{aligned}92 + 23 &= \\57 + 18 &= \\7 \cdot 14 &= \\23 + 95 &= \\98 - 24 &= \\54 : 2 &= \\120 - 105 &= \\70 - 21 &= \\51 : 3 &= \\12 \cdot 10 &= \\148 - 66 &= \\25 + 122 &= \\59 + 74 &= \end{aligned}$$



$$\begin{aligned}18 \cdot 5 &= \\43 + 59 &= \\75 + 43 &= \\10 \cdot 8 &= \\132 - 51 &= \\38 : 2 &= \\80 - 41 &= \\144 - 87 &= \\14 \cdot 7 &= \\114 - 46 &= \\133 - 81 &= \\25 \cdot 4 &= \\7 \cdot 12 &= \end{aligned}$$



СРЕДНЯЯ ДИСТАНЦИЯ

$$\begin{aligned}73 + 59 &= \\51 : 3 &= \\8 \cdot 16 &= \\32 : 2 &= \\123 : 3 &= \\9 \cdot 9 &= \\68 + 72 &= \\15 \cdot 7 &= \\95 - 39 &= \\58 + 50 &= \\58 + 49 &= \\18 - 6 &= \\50 : 2 &= \\18 \cdot 6 &= \\119 - 19 &= \\7 \cdot 12 &= \\10 \cdot 10 &= \\9 \cdot 14 &= \\77 - 33 &= \\112 : 8 &= \\9 \cdot 10 &= \\37 + 100 &= \\98 - 69 &= \\12 \cdot 9 &= \\102 : 2 &= \\112 : 4 &= \\5 \cdot 18 &= \\102 : 3 &= \\87 - 68 &= \\66 + 64 &= \\68 : 2 &= \end{aligned}$$



$$\begin{aligned}17 + 82 &= \\57 + 49 &= \\118 : 2 &= \\140 : 14 &= \\91 - 20 &= \\90 - 54 &= \\12 \cdot 9 &= \\105 : 7 &= \\104 : 2 &= \\62 : 2 &= \\76 + 38 &= \\82 + 44 &= \\50 + 56 &= \\39 + 99 &= \\129 - 111 &= \\9 \cdot 14 &= \\136 - 97 &= \\45 + 86 &= \\44 : 4 &= \\42 : 2 &= \\117 - 76 &= \\12 \cdot 9 &= \\147 : 7 &= \\95 : 5 &= \\37 \cdot 4 &= \\36 : 2 &= \\141 : 3 &= \\78 - 38 &= \\57 : 3 &= \\98 : 2 &= \\95 - 48 &= \end{aligned}$$



$$\begin{aligned}111 : 3 &= \\14 \cdot 9 &= \\5 \cdot 16 &= \\56 : 4 &= \\90 + 40 &= \\81 : 3 &= \\93 - 85 &= \\63 + 78 &= \\10 + 137 &= \\111 - 71 &= \\135 - 59 &= \\45 + 71 &= \\16 \cdot 6 &= \\8 \cdot 13 &= \\135 - 42 &= \\14 \cdot 7 &= \\80 - 24 &= \\11 \cdot 11 &= \\62 + 53 &= \\64 + 62 &= \\101 + 16 &= \\93 - 21 &= \\120 : 5 &= \\47 + 58 &= \\114 : 2 &= \\70 + 12 &= \\142 : 2 &= \\81 : 3 &= \\141 : 3 &= \\60 + 46 &= \\74 + 51 &= \end{aligned}$$



$$\begin{aligned}7 \cdot 18 &= \\148 - 68 &= \\69 - 39 &= \\75 - 38 &= \\77 - 15 &= \\69 - 29 &= \\131 - 20 &= \\93 : 3 &= \\38 + 95 &= \\128 : 8 &= \\121 : 11 &= \\46 + 59 &= \\54 + 78 &= \\128 - 59 &= \\124 - 81 &= \\112 - 96 &= \\46 + 78 &= \\69 + 21 &= \\87 - 18 &= \\146 - 48 &= \\128 + 14 &= \\143 - 90 &= \\52 : 2 &= \\7 \cdot 13 &= \\110 : 10 &= \\141 - 39 &= \\103 - 52 &= \\6 \cdot 17 &= \\95 : 5 &= \\103 - 56 &= \\81 - 46 &= \end{aligned}$$



$$\begin{aligned}28 : 2 &= \\9 \cdot 16 &= \\53 + 91 &= \\66 + 48 &= \\139 - 24 &= \\95 : 5 &= \\89 - 54 &= \\16 \cdot 5 &= \\50 + 61 &= \\22 : 2 &= \\108 : 9 &= \\132 - 84 &= \\82 + 41 &= \\9 \cdot 9 &= \\63 : 3 &= \\4 \cdot 35 &= \\95 : 5 &= \\9 \cdot 13 &= \\24 : 2 &= \\93 : 3 &= \\117 - 98 &= \\94 - 21 &= \\150 - 126 &= \\28 \cdot 3 &= \\38 + 86 &= \\54 + 76 &= \\118 : 2 &= \\133 - 22 &= \\43 + 98 &= \\108 + 40 &= \\94 : 2 &= \end{aligned}$$



Помоги мальчику положить рыбу в ведро. Закрась все клеточки, значение которых равно 150.



$98 + 60$	$124 + 18$	$750 : 5$	$385 - 155$	$3 \cdot 75$
$347 - 203$	$414 - 264$	$83 + 71$	$63 + 87$	$214 - 64$
$50 \cdot 3$	$64 + 93$	$529 - 349$	$720 : 6$	$49 + 109$
$106 + 35$	$960 : 30$	$864 - 697$	$25 \cdot 5$	$665 - 585$



МАРАФОН

- | | | | | |
|-----------------|----------------|----------------|-----------------|-----------------|
| $143 - 28 =$ | $146 : 2 =$ | $120 + 27 =$ | $12 \cdot 12 =$ | $132 - 75 =$ |
| $89 - 44 =$ | $102 - 30 =$ | $56 + 62 =$ | $12 \cdot 7 =$ | $11 \cdot 11 =$ |
| $7 \cdot 17 =$ | $76 - 57 =$ | $39 : 3 =$ | $7 \cdot 15 =$ | $17 \cdot 5 =$ |
| $87 - 40 =$ | $139 - 46 =$ | $79 - 54 =$ | $13 \cdot 9 =$ | $90 : 3 =$ |
| $11 \cdot 9 =$ | $57 : 3 =$ | $6 \cdot 14 =$ | $66 + 71 =$ | $9 \cdot 13 =$ |
| $8 \cdot 16 =$ | $123 : 3 =$ | $57 - 36 =$ | $6 \cdot 18 =$ | $52 + 81 =$ |
| $6 \cdot 14 =$ | $104 : 4 =$ | $66 + 21 =$ | $98 : 2 =$ | $65 - 21 =$ |
| $70 : 2 =$ | $81 - 45 =$ | $124 : 4 =$ | $120 : 2 =$ | $132 - 87 =$ |
| $12 \cdot 9 =$ | $143 - 29 =$ | $15 \cdot 7 =$ | $133 : 7 =$ | $67 + 64 =$ |
| $103 + 22 =$ | $9 \cdot 13 =$ | $74 + 72 =$ | $8 \cdot 14 =$ | $56 : 4 =$ |
| $141 - 114 =$ | $7 \cdot 11 =$ | $5 \cdot 14 =$ | $136 : 4 =$ | $37 + 43 =$ |
| $137 - 21 =$ | $79 + 41 =$ | $5 \cdot 17 =$ | $115 : 5 =$ | $15 \cdot 10 =$ |
| $69 + 47 =$ | $36 \cdot 4 =$ | $4 \cdot 22 =$ | $71 + 57 =$ | $146 - 34 =$ |
| $83 - 14 =$ | $55 - 36 =$ | $42 : 3 =$ | $115 - 17 =$ | $66 + 49 =$ |
| $118 : 2 =$ | $7 \cdot 13 =$ | $137 - 23 =$ | $76 : 4 =$ | $113 - 38 =$ |
| $12 \cdot 11 =$ | $146 - 23 =$ | $16 \cdot 5 =$ | $123 : 3 =$ | $9 \cdot 10 =$ |
| $74 + 55 =$ | $8 \cdot 15 =$ | $138 - 46 =$ | $8 \cdot 15 =$ | $55 + 71 =$ |
| $69 : 3 =$ | $42 : 2 =$ | $14 \cdot 7 =$ | $12 \cdot 6 =$ | $8 \cdot 11 =$ |
| $29 \cdot 5 =$ | $46 + 81 =$ | $135 - 105 =$ | $149 - 131 =$ | $45 + 72 =$ |
| $17 \cdot 7 =$ | $33 : 3 =$ | $61 - 43 =$ | $70 : 7 =$ | $131 - 14 =$ |
| $44 : 2 =$ | $56 + 61 =$ | $12 \cdot 8 =$ | $7 \cdot 11 =$ | $35 + 97 =$ |
| $15 \cdot 10 =$ | $145 - 49 =$ | $104 + 15 =$ | $128 - 15 =$ | $140 - 68 =$ |
| $8 \cdot 16 =$ | $95 : 5 =$ | $33 + 111 =$ | $140 : 14 =$ | $38 + 58 =$ |
| $96 : 4 =$ | $81 : 3 =$ | $7 \cdot 15 =$ | $25 + 64 =$ | $48 : 2 =$ |
| $63 : 3 =$ | $110 : 2 =$ | $98 - 39 =$ | $8 \cdot 11 =$ | $67 + 46 =$ |
| $99 - 56 =$ | $53 + 52 =$ | $112 - 28 =$ | $102 : 2 =$ | $140 : 2 =$ |
| $4 \cdot 22 =$ | $12 \cdot 7 =$ | $64 - 22 =$ | $85 - 43 =$ | $119 - 46 =$ |
| $9 \cdot 15 =$ | $8 \cdot 10 =$ | $63 : 3 =$ | $31 + 63 =$ | $93 - 63 =$ |
| $69 - 42 =$ | $19 \cdot 6 =$ | $57 : 3 =$ | $7 \cdot 14 =$ | $112 - 84 =$ |
| $114 + 16 =$ | $13 \cdot 7 =$ | $95 - 28 =$ | $116 - 77 =$ | $51 : 3 =$ |
| $58 : 2 =$ | $98 : 2 =$ | $13 \cdot 8 =$ | $24 + 91 =$ | $146 : 2 =$ |
| $30 : 3 =$ | $150 - 71 =$ | $17 \cdot 6 =$ | $10 \cdot 14 =$ | $92 - 27 =$ |
| $95 - 78 =$ | $44 + 63 =$ | $127 - 34 =$ | $69 + 52 =$ | $21 + 114 =$ |
| $142 - 18 =$ | $61 + 52 =$ | $88 : 8 =$ | $129 : 3 =$ | $32 + 74 =$ |
| $103 - 78 =$ | $82 : 2 =$ | $74 \cdot 2 =$ | $109 - 45 =$ | $9 \cdot 16 =$ |
| $111 : 3 =$ | $38 + 36 =$ | $116 - 42 =$ | $61 - 45 =$ | $94 - 14 =$ |
| $150 - 116 =$ | $133 : 7 =$ | $56 \cdot 2 =$ | $8 \cdot 16 =$ | $9 \cdot 10 =$ |
| $44 + 61 =$ | $150 - 113 =$ | $5 \cdot 17 =$ | $105 : 5 =$ | $47 + 71 =$ |
| $88 - 63 =$ | $46 + 94 =$ | $72 + 72 =$ | $8 \cdot 17 =$ | $57 : 3 =$ |
| $78 - 43 =$ | $129 : 3 =$ | $115 - 27 =$ | $98 + 27 =$ | $106 : 2 =$ |
| $125 - 75 =$ | $9 \cdot 14 =$ | $97 - 12 =$ | $38 + 109 =$ | $56 : 4 =$ |
| $58 : 2 =$ | $74 : 2 =$ | $143 : 11 =$ | $117 : 3 =$ | $116 - 70 =$ |
| $2 \cdot 49 =$ | $58 + 89 =$ | $13 \cdot 7 =$ | $13 \cdot 8 =$ | $8 \cdot 13 =$ |
| $32 : 2 =$ | $88 + 44 =$ | $119 : 7 =$ | $9 \cdot 11 =$ | $76 - 25 =$ |



СПРИНТ

$$\begin{aligned} 110 - 85 = \\ 80 : 5 = \\ 135 - 58 = \\ 91 + 60 = \\ 2 \cdot 44 = \\ 74 - 61 = \\ 97 + 84 = \\ 99 + 21 = \\ 28 + 128 = \\ 154 - 123 = \\ 7 \cdot 17 = \\ 122 - 12 = \\ 100 + 80 = \end{aligned}$$



$$\begin{aligned} 133 - 50 = \\ 48 + 83 = \\ 136 : 8 = \\ 161 : 7 = \\ 11 \cdot 18 = \\ 4 \cdot 43 = \\ 170 - 45 = \\ 93 + 77 = \\ 159 - 49 = \\ 71 + 65 = \\ 10 \cdot 12 = \\ 187 : 11 = \\ 183 - 163 = \end{aligned}$$



$$\begin{aligned} 70 + 69 = \\ 66 : 3 = \\ 12 \cdot 9 = \\ 147 - 64 = \\ 58 + 99 = \\ 136 : 2 = \\ 10 \cdot 15 = \\ 63 : 3 = \\ 38 : 2 = \\ 96 + 61 = \\ 108 + 2 = \\ 8 \cdot 16 = \\ 172 - 50 = \end{aligned}$$



$$\begin{aligned} 51 + 102 = \\ 56 + 79 = \\ 15 + 94 = \\ 138 - 37 = \\ 125 : 5 = \\ 110 - 83 = \\ 135 : 3 = \\ 69 + 76 = \\ 79 + 19 = \\ 200 - 140 = \\ 159 : 3 = \\ 183 - 87 = \\ 67 + 108 = \end{aligned}$$



$$\begin{aligned} 10 \cdot 11 = \\ 169 : 13 = \\ 77 : 7 = \\ 6 \cdot 32 = \\ 148 : 2 = \\ 26 : 2 = \\ 171 - 20 = \\ 129 + 62 = \\ 112 - 87 = \\ 14 \cdot 7 = \\ 97 + 53 = \\ 74 : 2 = \\ 43 + 151 = \end{aligned}$$



СРЕДНЯЯ ДИСТАНЦИЯ

$$\begin{aligned} 191 - 45 = \\ 12 \cdot 14 = \\ 58 + 103 = \\ 65 + 115 = \\ 102 : 6 = \\ 11 \cdot 14 = \\ 133 : 7 = \\ 14 \cdot 12 = \\ 70 + 110 = \\ 147 : 3 = \\ 68 + 129 = \\ 130 : 2 = \\ 46 + 142 = \\ 110 + 56 = \\ 109 + 78 = \\ 68 : 2 = \\ 4 \cdot 28 = \\ 104 + 57 = \\ 81 : 3 = \\ 131 - 46 = \\ 61 + 99 = \\ 126 - 28 = \\ 74 + 76 = \\ 170 - 52 = \\ 62 + 112 = \\ 96 + 58 = \\ 24 \cdot 7 = \\ 142 : 2 = \\ 5 \cdot 27 = \\ 75 + 88 = \\ 74 + 86 = \end{aligned}$$



$$\begin{aligned} 197 - 174 = \\ 146 - 123 = \\ 115 : 5 = \\ 40 : 4 = \\ 55 : 5 = \\ 82 + 60 = \\ 6 \cdot 24 = \\ 46 + 3 = \\ 196 - 174 = \\ 170 - 53 = \\ 66 : 6 = \\ 119 - 49 = \\ 62 + 80 = \\ 81 + 99 = \\ 192 : 12 = \\ 11 \cdot 17 = \\ 76 + 57 = \\ 12 \cdot 12 = \\ 13 \cdot 12 = \\ 17 \cdot 10 = \\ 179 - 117 = \\ 98 + 38 = \\ 32 : 2 = \\ 9 \cdot 15 = \\ 57 + 114 = \\ 145 : 5 = \\ 183 : 3 = \\ 117 - 48 = \\ 51 : 3 = \\ 80 + 70 = \\ 102 + 93 = \end{aligned}$$



$$\begin{aligned} 45 + 91 = \\ 193 - 26 = \\ 116 + 50 = \\ 129 : 3 = \\ 194 - 108 = \\ 90 + 39 = \\ 143 - 84 = \\ 95 : 5 = \\ 143 - 91 = \\ 153 : 9 = \\ 138 : 2 = \\ 99 : 9 = \\ 54 : 2 = \\ 125 - 78 = \\ 124 - 110 = \\ 118 - 5 = \\ 88 + 50 = \\ 75 : 5 = \\ 195 - 33 = \\ 98 + 67 = \\ 67 + 99 = \\ 85 + 97 = \\ 10 \cdot 18 = \\ 155 : 5 = \\ 172 - 47 = \\ 69 \cdot 2 = \\ 146 - 130 = \\ 15 \cdot 13 = \\ 122 - 108 = \\ 66 + 91 = \\ 26 : 2 = \end{aligned}$$



$$\begin{aligned} 13 \cdot 8 = \\ 191 - 19 = \\ 73 + 89 = \\ 11 \cdot 10 = \\ 64 + 83 = \\ 175 - 123 = \\ 192 : 6 = \\ 119 + 19 = \\ 68 : 4 = \\ 93 - 55 = \\ 125 - 48 = \\ 175 : 7 = \\ 124 - 113 = \\ 62 : 2 = \\ 119 : 7 = \\ 62 + 134 = \\ 90 + 76 = \\ 100 : 2 = \\ 9 \cdot 13 = \\ 11 \cdot 11 = \\ 27 \cdot 7 = \\ 9 \cdot 14 = \\ 6 \cdot 26 = \\ 95 : 5 = \\ 121 : 11 = \\ 155 - 99 = \\ 153 - 28 = \\ 104 - 32 = \\ 89 + 83 = \\ 9 \cdot 14 = \\ 182 - 75 = \end{aligned}$$



$$\begin{aligned} 72 : 3 = \\ 70 + 40 = \\ 105 : 3 = \\ 157 - 49 = \\ 20 \cdot 9 = \\ 63 + 131 = \\ 41 + 96 = \\ 14 \cdot 9 = \\ 94 : 2 = \\ 18 \cdot 7 = \\ 21 + 129 = \\ 190 - 107 = \\ 42 \cdot 4 = \\ 5 \cdot 21 = \\ 126 : 7 = \\ 190 - 123 = \\ 131 + 34 = \\ 167 - 49 = \\ 58 + 38 = \\ 119 - 48 = \\ 27 \cdot 3 = \\ 91 + 95 = \\ 11 \cdot 10 = \\ 130 : 13 = \\ 8 \cdot 13 = \\ 200 - 33 = \\ 200 - 162 = \\ 198 - 14 = \\ 70 + 83 = \\ 120 - 10 = \\ 61 + 114 = \end{aligned}$$



Впиши в клеточку верный знак.

$$397 + 524 - 436 + 284 \square 172 = 597$$

МАРАФОН

$12 \cdot 16 =$

$14 \cdot 9 =$

$144 + 193 =$

$21 \cdot 5 =$

$95 + 61 =$

$183 - 34 =$

$152 : 4 =$

$118 - 93 =$

$148 - 92 =$

$172 - 42 =$

$154 + 21 =$

$99 - 69 =$

$136 + 50 =$

$138 - 125 =$

$170 - 110 =$

$27 + 118 =$

$11 \cdot 10 =$

$50 + 85 =$

$182 : 14 =$

$27 + 157 =$

$90 + 88 =$

$9 \cdot 14 =$

$11 \cdot 10 =$

$183 : 3 =$

$77 : 7 =$

$22 + 151 =$

$66 : 2 =$

$100 - 66 =$

$149 + 26 =$

$192 - 27 =$

$91 + 107 =$

$12 \cdot 14 =$

$59 + 127 =$

$102 + 89 =$

$33 + 164 =$

$166 - 41 =$

$121 - 67 =$

$9 \cdot 14 =$

$15 \cdot 10 =$

$11 \cdot 10 =$

$146 : 2 =$

$42 : 3 =$

$99 : 9 =$

$69 + 75 =$

$170 - 33 =$

$11 \cdot 11 =$

$28 : 2 =$

$13 \cdot 11 =$

$26 + 141 =$

$106 : 2 =$

$51 + 137 =$

$92 + 98 =$

$189 : 9 =$

$57 : 3 =$

$95 - 76 =$

$14 \cdot 9 =$

$22 \cdot 8 =$

$81 + 109 =$

$185 - 42 =$

$192 - 72 =$

$15 \cdot 12 =$

$18 \cdot 11 =$

$139 - 113 =$

$166 - 28 =$

$19 \cdot 10 =$

$165 - 136 =$

$97 + 71 =$

$133 - 77 =$

$92 + 68 =$

$164 - 119 =$

$182 - 63 =$

$12 \cdot 9 =$

$93 : 3 =$

$86 + 76 =$

$197 - 155 =$

$177 - 154 =$

$2 \cdot 84 =$

$96 + 99 =$

$96 + 90 =$

$128 : 2 =$

$16 \cdot 12 =$

$10 \cdot 10 =$

$85 + 87 =$

$124 : 2 =$

$137 - 22 =$

$186 - 49 =$

$176 - 66 =$

$122 : 2 =$

$176 - 81 =$

$8 \cdot 22 =$

$80 + 86 =$

$42 : 2 =$

$192 : 8 =$

$183 - 170 =$

$73 + 88 =$

$165 - 114 =$

$11 \cdot 15 =$

$184 - 39 =$

$64 : 2 =$

$154 : 11 =$

$144 - 112 =$

$172 - 144 =$

$24 + 171 =$

$68 : 2 =$

$176 - 75 =$

$150 : 3 =$

$23 \cdot 5 =$

$4 \cdot 48 =$

$160 - 135 =$

$77 + 68 =$

$5 \cdot 22 =$

$95 + 58 =$

$14 + 163 =$

$81 : 3 =$

$187 - 51 =$

$37 + 123 =$

$142 - 119 =$

$155 - 76 =$

$178 - 124 =$

$165 - 46 =$

$91 : 7 =$

$108 - 35 =$

$17 \cdot 9 =$

$130 : 13 =$

$175 - 29 =$

$144 - 131 =$

$119 : 7 =$

$39 : 3 =$

$10 \cdot 12 =$

$138 : 2 =$

$7 \cdot 15 =$

$67 + 92 =$

$76 : 2 =$

$58 : 2 =$

$119 + 53 =$

$193 - 88 =$

$148 - 91 =$

$115 - 49 =$

$190 - 24 =$

$78 + 95 =$

$79 + 22 =$

$162 : 2 =$

$120 + 79 =$

$133 + 107 =$

$155 - 104 =$

$11 \cdot 18 =$

$176 - 51 =$

$164 - 39 =$

$7 \cdot 19 =$

$30 : 3 =$

$187 : 17 =$

$49 + 90 =$

$168 - 116 =$

$181 - 78 =$

$13 \cdot 10 =$

$75 + 122 =$

$18 \cdot 6 =$

$112 : 4 =$

$17 \cdot 6 =$

$168 - 136 =$

$140 - 21 =$

$45 + 97 =$

$100 + 81 =$

$196 : 4 =$

$8 \cdot 14 =$

$188 : 4 =$

$17 \cdot 10 =$

$148 - 18 =$

$184 : 4 =$

$151 - 64 =$

$21 \cdot 8 =$

$118 : 2 =$

$81 : 3 =$

$881 - 339 =$

$2 \cdot 77 =$

$175 - 34 =$

$11 \cdot 16 =$

$10 \cdot 13 =$

$155 - 114 =$

$85 + 29 =$

$111 - 89 =$

$98 : 7 =$

$145 - 58 =$

$13 \cdot 9 =$

$54 : 3 =$

$8 \cdot 16 =$

$66 : 6 =$

$88 + 74 =$

$5 \cdot 25 =$

$76 : 2 =$

$130 : 13 =$

$100 + 91 =$

$91 + 35 =$

$120 - 84 =$

$151 - 97 =$

$35 + 128 =$

$4 \cdot 48 =$

$2 \cdot 82 =$

$194 - 66 =$

$185 - 136 =$

$113 + 507 =$

$6 \cdot 23 =$

$11 \cdot 11 =$

$34 \cdot 4 =$

$6 \cdot 31 =$

$158 : 2 =$

$161 - 34 =$

$160 - 58 =$

$10 \cdot 15 =$

$127 + 50 =$

$145 - 31 =$

$11 \cdot 10 =$

$99 : 9 =$

$162 - 58 =$

$155 - 34 =$

$56 + 100 =$

$84 + 39 =$

$75 : 5 =$

$48 : 3 =$

$87 + 76 =$



СПРИНТ

$$\begin{aligned}147 : 3 = \\87 : 3 = \\158 + 48 = \\215 - 151 = \\176 : 4 = \\149 - 96 = \\124 - 60 = \\82 - 49 = \\246 - 82 = \\50 : 5 = \\238 - 29 = \\238 - 26 = \\8 \cdot 16 =\end{aligned}$$



$$\begin{aligned}89 - 48 = \\192 - 23 = \\19 \cdot 12 = \\223 - 8 = \\117 : 9 = \\183 - 162 = \\144 - 12 = \\222 + 27 = \\86 + 61 = \\244 : 4 = \\80 - 10 = \\165 : 5 = \\79 + 22 =\end{aligned}$$



$$\begin{aligned}154 : 2 = \\97 + 79 = \\187 : 11 = \\6 \cdot 28 = \\86 : 2 = \\126 : 2 = \\80 + 32 = \\161 : 7 = \\125 + 23 = \\148 - 60 = \\62 \cdot 4 = \\11 \cdot 12 = \\141 - 21 =\end{aligned}$$



$$\begin{aligned}18 \cdot 10 = \\5 \cdot 42 = \\247 - 44 = \\8 \cdot 30 = \\10 \cdot 16 = \\13 + 157 = \\133 + 53 = \\6 \cdot 21 = \\12 \cdot 12 = \\43 + 120 = \\109 + 63 = \\127 - 43 = \\118 + 80 =\end{aligned}$$



$$\begin{aligned}134 - 61 = \\121 : 11 = \\236 - 79 = \\3 \cdot 49 = \\37 + 124 = \\240 : 15 = \\32 : 2 = \\124 + 28 = \\15 \cdot 13 = \\13 \cdot 11 = \\121 + 51 = \\52 : 4 = \\146 : 2 =\end{aligned}$$



СРЕДНЯЯ ДИСТАНЦИЯ

$$\begin{aligned}80 : 5 = \\92 \cdot 2 = \\16 \cdot 13 = \\123 + 116 = \\126 : 2 = \\21 \cdot 6 = \\15 \cdot 11 = \\12 \cdot 16 = \\159 - 22 = \\8 \cdot 20 = \\98 + 119 = \\200 : 8 = \\213 - 29 = \\118 - 62 = \\130 + 6 = \\52 - 38 = \\27 \cdot 6 = \\131 - 52 = \\231 - 93 = \\187 : 17 = \\100 + 132 = \\148 + 81 = \\14 \cdot 10 = \\51 + 197 = \\13 \cdot 19 = \\12 \cdot 15 = \\202 - 41 = \\10 \cdot 11 = \\232 : 2 = \\14 \cdot 10 = \\247 - 114 =\end{aligned}$$



$$\begin{aligned}42 : 3 = \\123 : 3 = \\69 + 102 = \\36 \cdot 5 = \\222 - 112 = \\117 : 3 = \\195 - 103 = \\9 \cdot 18 = \\236 - 218 = \\102 + 79 = \\169 - 105 = \\98 + 105 = \\134 : 2 = \\124 + 67 = \\117 + 41 = \\57 : 3 = \\172 : 2 = \\68 : 2 = \\187 - 76 = \\155 - 45 = \\175 + 62 = \\99 + 79 = \\160 - 28 = \\110 + 65 = \\153 + 39 = \\248 : 8 = \\12 \cdot 19 = \\170 : 17 = \\34 + 161 = \\16 \cdot 13 = \\164 - 90 =\end{aligned}$$



$$\begin{aligned}22 \cdot 10 = \\81 - 53 = \\196 - 82 = \\50 \cdot 3 = \\148 - 67 = \\164 - 38 = \\136 : 8 = \\84 + 130 = \\11 \cdot 11 = \\103 + 114 = \\63 : 3 = \\14 \cdot 15 = \\19 + 51 = \\232 : 2 = \\5 \cdot 30 = \\4 \cdot 60 = \\17 \cdot 13 = \\15 \cdot 11 = \\107 - 78 = \\7 \cdot 19 = \\198 - 175 = \\135 - 15 = \\165 : 3 = \\147 + 74 = \\6 \cdot 28 = \\12 \cdot 15 = \\23 \cdot 7 = \\202 - 8 = \\128 : 8 = \\5 \cdot 30 = \\105 + 94 =\end{aligned}$$



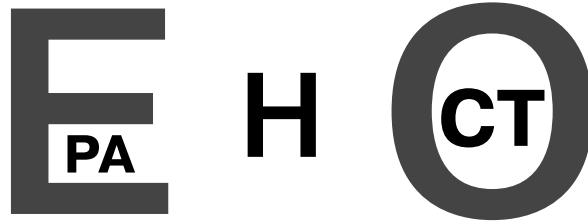
$$\begin{aligned}102 + 72 = \\89 + 117 = \\203 - 107 = \\16 \cdot 9 = \\55 + 101 = \\13 \cdot 12 = \\11 \cdot 13 = \\14 \cdot 16 = \\87 + 159 = \\216 : 9 = \\9 + 98 = \\250 - 197 = \\115 - 63 = \\85 : 5 = \\34 \cdot 4 = \\161 + 42 = \\220 - 201 = \\142 : 2 = \\162 - 117 = \\77 + 147 = \\209 : 19 = \\37 + 106 = \\105 + 109 = \\19 \cdot 13 = \\236 : 4 = \\98 : 2 = \\168 - 41 = \\208 - 88 = \\119 : 7 = \\180 : 10 = \\84 : 7 =\end{aligned}$$



$$\begin{aligned}94 + 115 = \\157 - 91 = \\208 : 8 = \\9 \cdot 14 = \\28 : 2 = \\26 \cdot 7 = \\52 + 132 = \\30 + 154 = \\134 : 2 = \\9 \cdot 15 = \\5 \cdot 39 = \\108 + 113 = \\37 \cdot 4 = \\93 + 123 = \\14 \cdot 13 = \\222 - 59 = \\236 - 208 = \\13 \cdot 12 = \\247 - 230 = \\9 \cdot 16 = \\6 \cdot 38 = \\247 - 124 = \\220 : 2 = \\111 : 3 = \\250 - 228 = \\200 : 4 = \\222 + 27 = \\5 \cdot 27 = \\20 + 193 = \\164 : 4 = \\11 \cdot 16 =\end{aligned}$$



Реши ребус и узнай, какое слово, связанное с математикой, было загадано.



МАРАФОН

- 14 · 11 =
- 15 · 8 =
- 120 – 75 =
- 7 · 27 =
- 44 · 3 =
- 206 : 2 =
- 8 · 24 =
- 93 : 3 =
- 20 · 10 =
- 31 · 5 =
- 98 + 107 =
- 220 : 20 =
- 175 – 46 =
- 105 : 7 =
- 248 – 126 =
- 167 – 102 =
- 94 : 2 =
- 15 · 13 =
- 182 : 14 =
- 101 + 64 =
- 156 – 100 =
- 15 · 16 =
- 12 · 11 =
- 20 · 7 =
- 226 – 79 =
- 115 + 112 =
- 11 · 16 =
- 218 – 190 =
- 28 · 7 =
- 231 – 178 =
- 24 · 8 =
- 23 + 152 =
- 11 · 11 =
- 185 – 93 =
- 21 · 7 =
- 200 : 8 =
- 16 · 14 =
- 247 : 19 =
- 139 – 126 =
- 217 – 59 =
- 110 : 5 =
- 80 + 124 =
- 11 · 15 =
- 97 + 146 =

- 78 + 64 =
- 202 + 13 =
- 11 · 18 =
- 10 · 17 =
- 29 · 7 =
- 11 · 15 =
- 18 · 12 =
- 82 : 2 =
- 243 – 99 =
- 31 · 5 =
- 218 – 207 =
- 12 · 17 =
- 14 · 9 =
- 71 + 118 =
- 6 · 28 =
- 66 : 6 =
- 238 – 30 =
- 218 – 57 =
- 166 : 2 =
- 209 : 19 =
- 81 : 3 =
- 110 + 114 =
- 134 : 2 =
- 188 : 4 =
- 16 · 8 =
- 214 – 173 =
- 10 · 21 =
- 235 : 5 =
- 13 · 10 =
- 224 – 112 =
- 16 · 8 =
- 13 · 14 =
- 16 · 11 =
- 76 : 4 =
- 231 : 3 =
- 89 + 109 =
- 248 : 2 =
- 13 · 15 =
- 110 + 99 =
- 207 – 124 =
- 16 · 8 =
- 141 : 3 =
- 92 : 2 =
- 18 · 12 =

- 20 · 8 =
- 19 · 9 =
- 128 + 70 =
- 237 – 159 =
- 24 · 8 =
- 179 – 32 =
- 162 – 103 =
- 175 – 29 =
- 215 – 27 =
- 18 · 10 =
- 71 + 76 =
- 222 – 206 =
- 89 + 108 =
- 3 · 58 =
- 189 – 87 =
- 162 + 98 =
- 3 · 43 =
- 14 · 13 =
- 237 – 115 =
- 215 + 17 =
- 104 + 103 =
- 14 · 16 =
- 9 · 15 =
- 225 – 95 =
- 179 – 61 =
- 94 : 2 =
- 30 · 6 =
- 163 – 67 =
- 116 + 43 =
- 58 · 4 =
- 15 · 13 =
- 156 + 21 =
- 159 – 124 =
- 174 + 72 =
- 237 – 16 =
- 117 + 120 =
- 71 + 117 =
- 111 + 73 =
- 15 + 129 =
- 151 – 67 =
- 154 – 25 =
- 56 + 16 =
- 125 – 36 =
- 11 · 15 =

- 245 : 5 =
- 15 · 15 =
- 4 · 35 =
- 160 – 29 =
- 107 + 128 =
- 24 · 7 =
- 43 + 78 =
- 105 – 57 =
- 184 – 95 =
- 110 : 10 =
- 108 : 6 =
- 182 : 14 =
- 12 · 12 =
- 26 + 210 =
- 111 + 88 =
- 14 · 14 =
- 12 · 12 =
- 100 + 74 =
- 16 · 10 =
- 243 – 17 =
- 100 + 99 =
- 130 : 10 =
- 78 : 2 =
- 82 : 2 =
- 96 + 75 =
- 15 · 11 =
- 198 – 51 =
- 173 – 40 =
- 180 : 3 =
- 173 – 33 =
- 236 – 124 =
- 123 – 61 =
- 106 + 100 =
- 93 + 32 =
- 97 + 111 =
- 216 – 105 =
- 80 + 67 =
- 10 · 14 =
- 153 – 27 =
- 13 · 13 =
- 8 · 29 =
- 17 · 13 =
- 142 + 105 =
- 171 : 3 =

- 93 + 149 =
- 28 + 157 =
- 54 : 3 =
- 104 + 77 =
- 16 · 14 =
- 28 : 2 =
- 11 · 17 =
- 115 + 122 =
- 122 – 101 =
- 244 – 39 =
- 14 · 9 =
- 5 · 31 =
- 159 – 131 =
- 3 · 49 =
- 77 + 155 =
- 226 : 2 =
- 9 · 15 =
- 104 + 103 =
- 62 + 111 =
- 162 : 2 =
- 132 : 11 =
- 208 : 2 =
- 65 : 5 =
- 141 : 3 =
- 8 · 16 =
- 170 – 93 =
- 130 – 64 =
- 48 : 3 =
- 184 – 175 =
- 100 + 119 =
- 108 – 29 =
- 10 · 20 =
- 154 : 11 =
- 126 : 2 =
- 183 : 3 =
- 212 : 4 =
- 184 – 36 =
- 11 · 14 =
- 174 – 11 =
- 10 · 14 =
- 112 + 43 =
- 234 : 6 =
- 98 + 86 =
- 15 · 8 =



СПРИНТ

$$\begin{aligned}194 - 72 = \\22 \cdot 9 = \\289 - 25 = \\12 \cdot 24 = \\14 \cdot 11 = \\13 + 183 = \\195 - 66 = \\148 : 4 = \\127 + 134 = \\150 : 6 = \\244 - 2 = \\85 + 120 = \\75 - 206 =\end{aligned}$$



$$\begin{aligned}267 : 3 = \\98 \cdot 3 = \\207 : 9 = \\101 + 144 = \\123 + 92 = \\74 + 152 = \\133 + 150 = \\42 : 3 = \\125 + 128 = \\198 - 182 = \\165 - 104 = \\60 : 5 = \\16 \cdot 10 =\end{aligned}$$



$$\begin{aligned}68 : 4 = \\125 + 71 = \\104 - 40 = \\25 \cdot 11 = \\17 \cdot 17 = \\16 \cdot 14 = \\163 + 105 = \\228 - 206 = \\129 - 83 = \\50 + 70 = \\115 : 5 = \\87 : 3 = \\11 \cdot 20 =\end{aligned}$$



$$\begin{aligned}289 - 199 = \\130 + 93 = \\96 : 4 = \\34 : 2 = \\158 : 2 = \\164 - 63 = \\18 \cdot 14 = \\124 + 53 = \\174 - 153 = \\34 : 2 = \\117 : 3 = \\253 - 138 = \\166 : 2 =\end{aligned}$$



$$\begin{aligned}149 - 55 = \\212 : 4 = \\228 - 122 = \\252 : 7 = \\25 + 248 = \\266 : 19 = \\56 : 4 = \\21 \cdot 11 = \\110 + 126 = \\228 : 4 = \\264 : 3 = \\176 : 16 = \\100 + 107 =\end{aligned}$$



СРЕДНЯЯ ДИСТАНЦИЯ

$$\begin{aligned}140 + 149 = \\42 \cdot 6 = \\207 : 9 = \\285 - 52 = \\176 : 11 = \\153 + 142 = \\281 - 142 = \\174 : 3 = \\128 + 84 = \\106 : 2 = \\173 - 118 = \\191 - 32 = \\230 - 209 = \\62 : 2 = \\14 \cdot 19 = \\11 \cdot 18 = \\70 + 146 = \\242 : 2 = \\99 + 117 = \\4 + 295 = \\176 - 89 = \\16 \cdot 14 = \\289 : 17 = \\155 : 5 = \\6 \cdot 28 = \\117 + 101 = \\121 + 135 = \\12 \cdot 13 = \\13 \cdot 13 = \\110 + 113 = \\286 : 2 =\end{aligned}$$



$$\begin{aligned}15 \cdot 15 = \\14 \cdot 14 = \\193 - 37 = \\231 : 21 = \\133 + 139 = \\133 : 7 = \\20 + 88 = \\225 - 82 = \\260 : 2 = \\7 \cdot 26 = \\18 \cdot 8 = \\188 - 47 = \\12 \cdot 13 = \\133 + 708 = \\132 + 56 = \\66 + 187 = \\9 \cdot 25 = \\201 : 3 = \\136 : 8 = \\55 : 5 = \\13 \cdot 15 = \\26 : 2 = \\220 - 80 = \\216 : 12 = \\123 + 102 = \\127 + 134 = \\134 : 2 = \\12 \cdot 15 = \\275 - 21 = \\66 + 136 = \\265 : 5 =\end{aligned}$$



$$\begin{aligned}231 - 64 = \\153 + 92 = \\283 - 204 = \\145 + 81 = \\55 : 5 = \\249 : 3 = \\6 \cdot 29 = \\121 : 11 = \\186 : 3 = \\150 : 10 = \\121 - 79 = \\199 - 130 = \\114 : 6 = \\105 + 70 = \\158 : 2 = \\161 : 7 = \\171 : 9 = \\189 + 108 = \\10 \cdot 22 = \\125 + 130 = \\243 - 59 = \\234 : 2 = \\141 + 37 = \\26 \cdot 8 = \\95 + 137 = \\14 \cdot 13 = \\13 \cdot 19 = \\109 - 97 = \\293 + 7 = \\28 : 2 = \\17 \cdot 12 =\end{aligned}$$



$$\begin{aligned}85 : 5 = \\142 : 2 = \\3 + 182 = \\22 + 275 = \\199 + 100 = \\93 : 3 = \\119 + 115 = \\45 : 3 = \\128 + 123 = \\145 + 135 = \\44 + 65 = \\130 + 99 = \\255 - 84 = \\20 : 2 = \\11 \cdot 16 = \\222 - 158 = \\109 - 63 = \\56 + 216 = \\44 : 2 = \\137 - 79 = \\19 \cdot 13 = \\40 : 4 = \\215 - 29 = \\107 + 97 = \\13 \cdot 18 = \\154 - 64 = \\216 : 8 = \\10 \cdot 15 = \\243 : 3 = \\287 : 7 = \\95 + 163 =\end{aligned}$$



$$\begin{aligned}102 - 69 = \\101 + 104 = \\263 - 106 = \\9 \cdot 18 = \\15 \cdot 18 = \\113 + 106 = \\14 \cdot 20 = \\149 - 75 = \\12 \cdot 11 = \\254 - 120 = \\129 : 3 = \\12 \cdot 13 = \\136 + 68 = \\18 \cdot 13 = \\32 + 172 = \\42 + 98 = \\213 : 3 = \\129 + 51 = \\260 : 2 = \\163 + 12 = \\268 - 41 = \\171 + 125 = \\119 + 143 = \\19 \cdot 11 = \\7 \cdot 26 = \\125 : 5 = \\9 \cdot 23 = \\18 \cdot 14 = \\16 \cdot 18 = \\17 \cdot 10 = \\16 \cdot 14 =\end{aligned}$$



Разгадай правило, по которому составлен ряд чисел, и заполни пропуски.

24, __, 138, 195, __, 309, 366, __

МАРАФОН

$$\begin{aligned} 255 : 15 = \\ 56 : 4 = \\ 28 \cdot 10 = \\ 240 - 127 = \\ 240 + 22 = \\ 125 + 69 = \\ 30 \cdot 7 = \\ 14 \cdot 11 = \\ 182 : 14 = \\ 127 + 118 = \\ 91 + 136 = \\ 88 : 2 = \\ 15 \cdot 17 = \\ 70 : 2 = \\ 272 - 29 = \\ 120 - 28 = \\ 70 \cdot 3 = \\ 177 : 3 = \\ 15 \cdot 17 = \\ 150 - 132 = \\ 170 - 31 = \\ 300 - 48 = \\ 249 - 57 = \\ 160 : 2 = \\ 229 - 118 = \\ 246 : 2 = \\ 245 - 14 = \\ 204 - 128 = \\ 248 : 2 = \\ 86 + 144 = \\ 20 \cdot 10 = \\ 182 : 7 = \\ 17 \cdot 9 = \\ 132 - 50 = \\ 265 : 5 = \\ 186 - 20 = \\ 117 - 57 = \\ 94 + 109 = \\ 29 + 182 = \\ 8 \cdot 20 = \\ 58 : 2 = \\ 239 - 150 = \\ 210 : 14 = \\ 243 - 129 = \end{aligned}$$

$$\begin{aligned} 98 + 38 = \\ 12 \cdot 13 = \\ 300 : 2 = \\ 263 - 95 = \\ 14 \cdot 16 = \\ 242 - 13 = \\ 4 \cdot 69 = \\ 76 : 2 = \\ 142 + 80 = \\ 6 \cdot 38 = \\ 15 \cdot 11 = \\ 223 - 89 = \\ 50 + 144 = \\ 111 - 68 = \\ 111 + 123 = \\ 262 - 24 = \\ 264 : 8 = \\ 8 \cdot 29 = \\ 123 + 112 = \\ 275 - 227 = \\ 162 : 2 = \\ 283 - 79 = \\ 90 : 5 = \\ 190 : 10 = \\ 3 \cdot 64 = \\ 91 : 7 = \\ 19 \cdot 10 = \\ 17 \cdot 16 = \\ 126 + 105 = \\ 279 : 3 = \\ 68 + 143 = \\ 204 - 90 = \\ 148 : 2 = \\ 317 - 2 = \\ 143 - 121 = \\ 233 - 45 = \\ 88 : 2 = \\ 16 \cdot 15 = \\ 4 \cdot 68 = \\ 15 \cdot 15 = \\ 201 : 3 = \\ 144 + 110 = \\ 226 - 51 = \\ 252 : 2 = \end{aligned}$$

$$\begin{aligned} 184 : 8 = \\ 18 \cdot 9 = \\ 294 : 14 = \\ 199 + 5 = \\ 112 - 89 = \\ 280 - 135 = \\ 247 + 46 = \\ 255 + 33 = \\ 94 : 2 = \\ 33 + 218 = \\ 283 - 180 = \\ 94 + 186 = \\ 215 - 92 = \\ 224 : 2 = \\ 177 - 112 = \\ 144 + 85 = \\ 262 : 2 = \\ 136 + 136 = \\ 117 - 49 = \\ 9 \cdot 18 = \\ 108 : 2 = \\ 23 \cdot 13 = \\ 188 + 2 = \\ 112 + 22 = \\ 113 \cdot 2 = \\ 215 : 5 = \\ 275 : 5 = \\ 247 : 13 = \\ 163 - 29 = \\ 140 + 126 = \\ 247 : 19 = \\ 117 : 9 = \\ 2 \cdot 91 = \\ 115 : 5 = \\ 243 - 30 = \\ 255 - 71 = \\ 115 + 121 = \\ 176 : 8 = \\ 237 - 210 = \\ 277 - 24 = \\ 22 + 232 = \\ 92 + 139 = \\ 12 \cdot 17 = \\ 66 + 128 = \end{aligned}$$

$$\begin{aligned} 208 : 16 = \\ 18 \cdot 15 = \\ 85 : 5 = \\ 108 + 102 = \\ 64 : 4 = \\ 84 : 7 = \\ 267 : 3 = \\ 100 - 61 = \\ 16 \cdot 12 = \\ 9 \cdot 27 = \\ 37 + 171 = \\ 55 + 149 = \\ 69 - 24 = \\ 167 + 90 = \\ 15 \cdot 19 = \\ 18 \cdot 14 = \\ 14 \cdot 12 = \\ 266 : 19 = \\ 96 : 6 = \\ 234 - 49 = \\ 10 \cdot 17 = \\ 27 \cdot 6 = \\ 143 + 127 = \\ 154 + 108 = \\ 213 : 3 = \\ 207 - 82 = \\ 141 : 3 = \\ 207 : 9 = \\ 174 : 6 = \\ 221 - 78 = \\ 13 \cdot 16 = \\ 18 \cdot 11 = \\ 10 \cdot 21 = \\ 220 + 21 = \\ 168 : 12 = \\ 141 + 138 = \\ 129 + 138 = \\ 225 : 9 = \\ 152 - 30 = \\ 131 + 75 = \\ 11 \cdot 18 = \\ 280 - 37 = \\ 299 : 13 = \\ 5 \cdot 28 = \end{aligned}$$

$$\begin{aligned} 5 \cdot 48 = \\ 142 - 12 = \\ 261 : 3 = \\ 113 - 64 = \\ 9 \cdot 30 = \\ 126 + 117 = \\ 233 - 97 = \\ 231 - 9 = \\ 275 + 18 = \\ 21 \cdot 12 = \\ 123 : 3 = \\ 214 : 2 = \\ 10 \cdot 18 = \\ 285 : 15 = \\ 14 \cdot 11 = \\ 11 \cdot 15 = \\ 40 + 101 = \\ 8 \cdot 22 = \\ 17 \cdot 11 = \\ 112 + 143 = \\ 47 + 164 = \\ 238 : 7 = \\ 16 \cdot 15 = \\ 16 \cdot 14 = \\ 232 : 2 = \\ 117 + 127 = \\ 125 : 5 = \\ 195 - 73 = \\ 24 \cdot 11 = \\ 14 \cdot 13 = \\ 154 : 7 = \\ 256 - 205 = \\ 14 \cdot 12 = \\ 75 + 80 = \\ 215 + 11 = \\ 291 - 74 = \\ 16 + 69 = \\ 204 : 3 = \\ 113 + 138 = \\ 279 - 244 = \\ 72 : 3 = \\ 248 : 2 = \\ 42 + 221 = \\ 287 - 11 = \end{aligned}$$



СПРИНТ

$$\begin{aligned}22 \cdot 10 = \\ 128 : 2 = \\ 282 - 48 = \\ 315 : 5 = \\ 261 : 9 = \\ 147 + 64 = \\ 232 - 176 = \\ 217 - 106 = \\ 285 - 188 = \\ 336 - 129 = \\ 6 \cdot 55 = \\ 134 + 65 = \\ 212 : 2 =\end{aligned}$$



$$\begin{aligned}22 \cdot 12 = \\ 234 - 167 = \\ 134 + 155 = \\ 290 - 18 = \\ 114 + 125 = \\ 169 + 92 = \\ 159 : 3 = \\ 247 : 19 = \\ 195 - 171 = \\ 130 : 5 = \\ 339 : 3 = \\ 113 + 225 = \\ 135 + 143 =\end{aligned}$$



$$\begin{aligned}18 \cdot 14 = \\ 21 \cdot 13 = \\ 238 - 11 = \\ 312 : 26 = \\ 236 - 19 = \\ 134 : 2 = \\ 63 : 3 = \\ 9 + 235 = \\ 52 + 173 = \\ 171 : 3 = \\ 119 : 7 = \\ 13 \cdot 20 = \\ 142 : 2 =\end{aligned}$$



$$\begin{aligned}76 : 2 = \\ 349 - 67 = \\ 14 \cdot 21 = \\ 74 : 2 = \\ 37 \cdot 6 = \\ 12 \cdot 16 = \\ 196 + 86 = \\ 10 \cdot 17 = \\ 124 + 175 = \\ 70 + 229 = \\ 9 \cdot 20 = \\ 142 : 2 = \\ 32 \cdot 8 =\end{aligned}$$



$$\begin{aligned}269 - 81 = \\ 344 - 119 = \\ 256 - 129 = \\ 114 : 3 = \\ 291 + 17 = \\ 226 : 2 = \\ 18 \cdot 10 = \\ 329 - 47 = \\ 278 - 60 = \\ 280 - 138 = \\ 312 - 27 = \\ 244 : 4 = \\ 199 - 58 =\end{aligned}$$



СРЕДНЯЯ ДИСТАНЦИЯ

$$\begin{aligned}285 - 61 = \\ 89 + 220 = \\ 19 \cdot 11 = \\ 16 \cdot 21 = \\ 341 - 25 = \\ 143 : 11 = \\ 308 - 93 = \\ 6 \cdot 33 = \\ 322 : 2 = \\ 265 - 145 = \\ 242 + 6 = \\ 168 - 103 = \\ 19 \cdot 14 = \\ 32 \cdot 8 = \\ 75 : 5 = \\ 108 + 155 = \\ 21 \cdot 16 = \\ 186 - 105 = \\ 175 + 108 = \\ 32 \cdot 7 = \\ 19 \cdot 16 = \\ 37 \cdot 7 = \\ 11 \cdot 21 = \\ 99 + 215 = \\ 162 + 188 = \\ 56 : 2 = \\ 15 \cdot 14 = \\ 342 : 3 = \\ 321 - 54 = \\ 134 + 187 = \\ 126 + 169 =\end{aligned}$$



$$\begin{aligned}338 : 26 = \\ 172 : 2 = \\ 232 : 4 = \\ 308 - 120 = \\ 240 : 10 = \\ 132 : 3 = \\ 11 \cdot 21 = \\ 104 : 8 = \\ 5 \cdot 41 = \\ 147 : 3 = \\ 134 : 2 = \\ 304 : 8 = \\ 46 \cdot 7 = \\ 143 : 11 = \\ 333 : 3 = \\ 20 \cdot 10 = \\ 252 - 122 = \\ 142 + 136 = \\ 50 + 292 = \\ 315 - 72 = \\ 274 : 2 = \\ 95 + 175 = \\ 43 \cdot 5 = \\ 77 : 7 = \\ 174 + 91 = \\ 126 + 172 = \\ 331 - 216 = \\ 51 : 3 = \\ 15 \cdot 21 = \\ 232 - 60 = \\ 51 \cdot 6 =\end{aligned}$$



$$\begin{aligned}263 - 152 = \\ 287 : 7 = \\ 322 - 68 = \\ 218 - 145 = \\ 16 \cdot 18 = \\ 139 + 187 = \\ 329 : 7 = \\ 9 \cdot 38 = \\ 268 + 47 = \\ 122 : 2 = \\ 34 + 259 = \\ 103 + 195 = \\ 301 : 7 = \\ 319 - 74 = \\ 171 + 127 = \\ 56 : 2 = \\ 234 : 2 = \\ 8 \cdot 43 = \\ 42 \cdot 5 = \\ 310 - 33 = \\ 70 \cdot 5 = \\ 21 \cdot 12 = \\ 36 \cdot 7 = \\ 63 : 3 = \\ 335 + 53 = \\ 165 + 107 = \\ 342 - 78 = \\ 15 \cdot 13 = \\ 14 \cdot 24 = \\ 16 \cdot 19 = \\ 142 + 96 =\end{aligned}$$



$$\begin{aligned}235 + 91 = \\ 32 \cdot 9 = \\ 236 : 2 = \\ 15 \cdot 18 = \\ 16 \cdot 13 = \\ 79 + 263 = \\ 294 - 130 = \\ 171 : 9 = \\ 168 + 140 = \\ 321 - 87 = \\ 224 + 94 = \\ 318 : 3 = \\ 273 - 96 = \\ 258 : 6 = \\ 4 \cdot 53 = \\ 294 : 6 = \\ 307 - 144 = \\ 252 : 18 = \\ 15 \cdot 19 = \\ 317 - 95 = \\ 49 + 155 = \\ 313 - 47 = \\ 168 : 4 = \\ 129 : 3 = \\ 315 : 3 = \\ 278 - 244 = \\ 88 : 8 = \\ 140 + 164 = \\ 225 + 67 = \\ 270 + 71 = \\ 312 - 245 =\end{aligned}$$



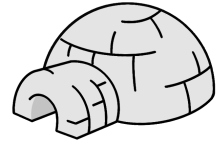
$$\begin{aligned}114 + 146 = \\ 90 + 156 = \\ 348 - 21 = \\ 349 - 55 = \\ 205 - 130 = \\ 256 + 69 = \\ 138 : 2 = \\ 204 - 193 = \\ 14 \cdot 20 = \\ 325 : 5 = \\ 290 - 59 = \\ 179 - 96 = \\ 15 \cdot 17 = \\ 330 : 5 = \\ 155 + 177 = \\ 64 + 257 = \\ 17 \cdot 20 = \\ 116 + 201 = \\ 86 : 2 = \\ 342 : 2 = \\ 161 - 150 = \\ 219 : 3 = \\ 199 - 44 = \\ 261 - 117 = \\ 23 \cdot 9 = \\ 322 - 47 = \\ 10 \cdot 31 = \\ 313 - 27 = \\ 233 - 190 = \\ 15 \cdot 20 = \\ 24 + 313 =\end{aligned}$$



Помоги пингвину добраться до домика. Закрась все клеточки, значение которых равно 282.



$167 + 185$	$513 - 314$	$195 + 98$	$297 - 26$	$63 \cdot 4$
$724 - 442$	$72 \cdot 4$	$376 - 114$	$2 \cdot 141$	$189 + 172$
$196 + 106$	$163 + 119$	$846 : 3$	$139 + 163$	$573 - 291$
$87 \cdot 6$	$904 - 642$	$597 - 325$	$522 : 2$	$98 + 195$



МАРАФОН

$$\begin{aligned}
 &253 - 29 = \\
 &270 - 43 = \\
 &174 : 3 = \\
 &226 : 2 = \\
 &14 \cdot 15 = \\
 &39 + 294 = \\
 &17 \cdot 19 = \\
 &283 + 39 = \\
 &231 + 57 = \\
 &46 : 2 = \\
 &13 \cdot 15 = \\
 &320 : 10 = \\
 &171 - 88 = \\
 &287 + 50 = \\
 &23 \cdot 15 = \\
 &34 : 2 = \\
 &42 \cdot 7 = \\
 &333 - 214 = \\
 &87 : 3 = \\
 &174 : 3 = \\
 &62 + 246 = \\
 &216 : 4 = \\
 &325 - 131 = \\
 &321 - 306 = \\
 &161 + 108 = \\
 &194 : 2 = \\
 &287 - 85 = \\
 &217 : 7 = \\
 &37 \cdot 9 = \\
 &326 - 164 = \\
 &187 - 39 = \\
 &202 + 143 = \\
 &10 \cdot 20 = \\
 &347 - 122 = \\
 &186 - 54 = \\
 &19 \cdot 18 = \\
 &324 : 4 = \\
 &350 - 275 = \\
 &153 + 147 = \\
 &289 - 57 = \\
 &98 : 7 = \\
 &171 : 3 = \\
 &242 : 2 = \\
 &22 \cdot 13 =
 \end{aligned}$$

$$\begin{aligned}
 &280 + 69 = \\
 &55 \cdot 5 = \\
 &21 \cdot 16 = \\
 &340 - 179 = \\
 &284 : 4 = \\
 &2 \cdot 95 = \\
 &254 : 2 = \\
 &316 - 49 = \\
 &165 - 108 = \\
 &4 \cdot 86 = \\
 &284 - 25 = \\
 &19 \cdot 10 = \\
 &108 + 199 = \\
 &301 : 7 = \\
 &239 - 166 = \\
 &114 - 80 = \\
 &85 : 5 = \\
 &327 - 130 = \\
 &5 \cdot 65 = \\
 &17 \cdot 16 = \\
 &43 + 172 = \\
 &230 - 201 = \\
 &288 - 132 = \\
 &72 + 73 = \\
 &120 + 155 = \\
 &333 : 3 = \\
 &267 - 119 = \\
 &105 : 7 = \\
 &215 + 89 = \\
 &276 : 3 = \\
 &134 + 118 = \\
 &14 \cdot 20 = \\
 &345 : 3 = \\
 &268 + 70 = \\
 &333 : 9 = \\
 &141 - 74 = \\
 &11 \cdot 26 = \\
 &195 : 5 = \\
 &208 : 8 = \\
 &133 : 7 = \\
 &51 : 3 = \\
 &17 \cdot 20 = \\
 &269 - 160 = \\
 &20 \cdot 17 =
 \end{aligned}$$

$$\begin{aligned}
 &321 - 218 = \\
 &209 + 49 = \\
 &5 \cdot 69 = \\
 &292 - 277 = \\
 &16 \cdot 11 = \\
 &109 + 160 = \\
 &177 : 3 = \\
 &342 - 224 = \\
 &212 : 2 = \\
 &196 + 101 = \\
 &51 \cdot 5 = \\
 &57 : 3 = \\
 &26 \cdot 12 = \\
 &327 - 214 = \\
 &272 - 57 = \\
 &15 \cdot 15 = \\
 &327 - 213 = \\
 &239 + 94 = \\
 &307 - 82 = \\
 &142 : 2 = \\
 &284 : 4 = \\
 &296 + 9 = \\
 &22 \cdot 15 = \\
 &35 \cdot 9 = \\
 &328 - 213 = \\
 &288 - 33 = \\
 &38 : 2 = \\
 &69 : 3 = \\
 &195 + 108 = \\
 &189 - 130 = \\
 &150 + 174 = \\
 &195 : 5 = \\
 &86 : 2 = \\
 &336 : 28 = \\
 &154 + 126 = \\
 &15 \cdot 23 = \\
 &15 \cdot 14 = \\
 &236 - 199 = \\
 &318 : 3 = \\
 &143 + 162 = \\
 &220 : 5 = \\
 &141 - 129 = \\
 &16 \cdot 13 = \\
 &325 - 67 =
 \end{aligned}$$

$$\begin{aligned}
 &213 - 191 = \\
 &315 : 5 = \\
 &207 - 197 = \\
 &103 + 218 = \\
 &291 : 3 = \\
 &164 + 163 = \\
 &127 + 195 = \\
 &3 \cdot 83 = \\
 &224 - 33 = \\
 &9 \cdot 25 = \\
 &9 \cdot 26 = \\
 &125 + 178 = \\
 &251 - 65 = \\
 &258 - 116 = \\
 &107 + 162 = \\
 &12 \cdot 18 = \\
 &15 \cdot 12 = \\
 &90 + 210 = \\
 &242 + 82 = \\
 &96 + 218 = \\
 &337 - 187 = \\
 &68 + 213 = \\
 &59 \cdot 3 = \\
 &9 \cdot 21 = \\
 &6 \cdot 34 = \\
 &15 \cdot 14 = \\
 &19 \cdot 10 = \\
 &97 + 209 = \\
 &12 \cdot 21 = \\
 &152 : 2 = \\
 &305 - 72 = \\
 &319 : 11 = \\
 &162 - 16 = \\
 &337 - 68 = \\
 &291 : 3 = \\
 &42 \cdot 4 = \\
 &232 + 95 = \\
 &36 + 291 = \\
 &280 - 232 = \\
 &325 - 67 = \\
 &43 \cdot 5 = \\
 &282 : 2 = \\
 &282 - 41 = \\
 &240 - 142 =
 \end{aligned}$$

$$\begin{aligned}
 &13 \cdot 18 = \\
 &115 : 5 = \\
 &129 : 3 = \\
 &263 - 83 = \\
 &303 : 3 = \\
 &11 \cdot 23 = \\
 &328 : 4 = \\
 &147 + 112 = \\
 &58 + 290 = \\
 &25 \cdot 9 = \\
 &67 + 146 = \\
 &23 \cdot 14 = \\
 &346 - 225 = \\
 &204 - 134 = \\
 &268 - 178 = \\
 &285 + 40 = \\
 &61 \cdot 4 = \\
 &125 + 155 = \\
 &66 \cdot 4 = \\
 &106 + 221 = \\
 &253 - 125 = \\
 &172 + 165 = \\
 &255 - 12 = \\
 &158 : 2 = \\
 &18 + 323 = \\
 &111 + 126 = \\
 &124 + 160 = \\
 &13 + 313 = \\
 &121 : 11 = \\
 &16 \cdot 21 = \\
 &32 + 213 = \\
 &143 + 129 = \\
 &257 - 5 = \\
 &287 - 99 = \\
 &150 : 2 = \\
 &191 + 151 = \\
 &276 : 12 = \\
 &345 - 281 = \\
 &313 - 50 = \\
 &182 + 158 = \\
 &15 \cdot 21 = \\
 &339 : 3 = \\
 &94 + 147 = \\
 &11 \cdot 21 =
 \end{aligned}$$



СПРИНТ

$$\begin{aligned}368 : 4 = \\42 : 2 = \\12 \cdot 22 = \\334 - 59 = \\20 \cdot 17 = \\82 : 2 = \\239 + 115 = \\20 \cdot 19 = \\311 - 91 = \\319 - 264 = \\395 - 43 = \\20 \cdot 10 = \\191 + 180 =\end{aligned}$$



$$\begin{aligned}188 + 155 = \\226 - 136 = \\136 : 8 = \\18 \cdot 19 = \\399 : 19 = \\192 + 173 = \\166 + 178 = \\225 + 176 = \\328 - 14 = \\18 \cdot 19 = \\96 : 2 = \\289 : 17 = \\322 - 137 =\end{aligned}$$



$$\begin{aligned}45 + 260 = \\23 \cdot 9 = \\171 + 175 = \\86 + 282 = \\175 : 5 = \\22 : 2 = \\397 - 68 = \\191 - 155 = \\78 + 300 = \\298 - 156 = \\21 \cdot 11 = \\161 + 126 = \\392 - 74 =\end{aligned}$$



$$\begin{aligned}318 - 71 = \\125 + 180 = \\381 : 3 = \\19 \cdot 15 = \\265 : 5 = \\171 + 185 = \\360 - 236 = \\180 + 180 = \\102 + 86 = \\395 - 239 = \\21 \cdot 14 = \\400 : 2 = \\176 : 2 =\end{aligned}$$



$$\begin{aligned}356 - 19 = \\373 - 187 = \\363 - 174 = \\174 : 6 = \\11 \cdot 19 = \\6 \cdot 49 = \\146 + 158 = \\314 : 2 = \\20 \cdot 10 = \\108 \cdot 3 = \\161 : 7 = \\208 - 66 = \\266 : 2 =\end{aligned}$$



СРЕДНЯЯ ДИСТАНЦИЯ

$$\begin{aligned}355 - 129 = \\248 - 178 = \\20 \cdot 17 = \\5 \cdot 48 = \\58 : 2 = \\13 \cdot 17 = \\11 \cdot 24 = \\80 + 191 = \\153 - 135 = \\39 - 21 = \\143 : 13 = \\260 : 10 = \\306 - 94 = \\169 + 185 = \\263 + 28 = \\95 : 5 = \\19 \cdot 20 = \\372 + 11 = \\142 + 162 = \\159 + 185 = \\327 : 3 = \\23 \cdot 11 = \\145 + 198 = \\114 + 183 = \\138 - 91 = \\385 - 109 = \\194 + 167 = \\165 + 176 = \\207 - 175 = \\126 - 39 = \\341 + 48 =\end{aligned}$$



$$\begin{aligned}260 : 26 = \\267 : 3 = \\339 : 3 = \\62 : 2 = \\184 : 4 = \\190 - 150 = \\98 : 2 = \\336 - 15 = \\154 : 11 = \\201 : 3 = \\8 \cdot 28 = \\154 + 177 = \\304 + 6 = \\142 + 163 = \\22 \cdot 10 = \\278 + 4 = \\400 : 10 = \\133 + 76 = \\285 : 15 = \\21 \cdot 11 = \\117 + 158 = \\271 - 158 = \\372 - 221 = \\14 \cdot 20 = \\79 - 49 = \\394 - 218 = \\211 + 172 = \\250 : 2 = \\195 + 180 = \\87 : 3 = \\184 : 4 =\end{aligned}$$



$$\begin{aligned}354 - 28 = \\133 : 7 = \\23 \cdot 14 = \\224 : 8 = \\372 - 256 = \\272 : 8 = \\162 + 198 = \\273 + 83 = \\265 + 133 = \\7 \cdot 54 = \\12 \cdot 21 = \\13 \cdot 20 = \\322 : 2 = \\128 + 166 = \\151 + 142 = \\222 + 88 = \\345 - 72 = \\13 \cdot 20 = \\81 : 3 = \\396 - 60 = \\88 + 199 = \\299 : 13 = \\292 : 2 = \\109 - 3 = \\192 + 157 = \\288 : 8 = \\74 + 122 = \\308 - 260 = \\58 \cdot 4 = \\110 : 5 = \\197 + 177 =\end{aligned}$$



$$\begin{aligned}96 + 86 = \\186 : 3 = \\146 + 243 = \\327 - 85 = \\185 + 175 = \\375 - 38 = \\21 \cdot 14 = \\171 : 9 = \\14 \cdot 20 = \\133 + 264 = \\327 - 140 = \\15 \cdot 23 = \\102 - 61 = \\50 : 5 = \\219 - 138 = \\20 \cdot 10 = \\11 \cdot 24 = \\169 + 124 = \\12 \cdot 19 = \\364 : 4 = \\16 \cdot 23 = \\107 - 32 = \\15 \cdot 13 = \\20 \cdot 13 = \\324 - 77 = \\386 - 316 = \\54 \cdot 7 = \\219 - 193 = \\385 + 54 = \\324 : 2 = \\159 + 151 =\end{aligned}$$



$$\begin{aligned}64 : 4 = \\274 - 215 = \\400 - 61 = \\14 \cdot 22 = \\356 - 309 = \\157 + 165 = \\170 + 191 = \\187 + 37 = \\310 + 60 = \\164 + 188 = \\39 \cdot 10 = \\25 + 312 = \\185 : 5 = \\11 \cdot 30 = \\357 - 80 = \\391 - 171 = \\14 \cdot 18 = \\14 \cdot 16 = \\291 : 3 = \\361 : 19 = \\326 : 2 = \\6 \cdot 37 = \\14 \cdot 19 = \\139 + 154 = \\8 \cdot 44 = \\222 : 6 = \\15 \cdot 26 = \\397 - 260 = \\187 + 130 = \\147 + 183 = \\163 + 196 =\end{aligned}$$



Впиши в пропуски одни и те же числа, чтобы равенства стали верными.

$$712 + \underline{\quad} = 71 + 845$$

$$903 - 287 = \underline{\quad} + 412$$

МАРАФОН

$400 : 4 =$

$209 + 170 =$

$132 : 12 =$

$107 + 160 =$

$15 \cdot 17 =$

$168 + 175 =$

$387 : 9 =$

$86 + 136 =$

$261 - 221 =$

$105 + 181 =$

$26 + 362 =$

$378 - 234 =$

$8 \cdot 37 =$

$62 \cdot 4 =$

$398 - 130 =$

$8 \cdot 37 =$

$22 \cdot 17 =$

$190 + 184 =$

$336 - 78 =$

$203 - 168 =$

$117 + 177 =$

$341 + 31 =$

$219 - 54 =$

$91 + 221 =$

$284 - 155 =$

$18 \cdot 15 =$

$352 - 180 =$

$192 + 184 =$

$152 : 8 =$

$16 \cdot 14 =$

$325 - 286 =$

$176 + 147 =$

$352 - 42 =$

$15 \cdot 24 =$

$176 + 81 =$

$23 \cdot 13 =$

$320 - 140 =$

$333 : 3 =$

$156 + 154 =$

$121 + 166 =$

$258 - 98 =$

$349 + 42 =$

$287 : 7 =$

$20 \cdot 12 =$

$177 : 3 =$

$175 + 196 =$

$107 + 289 =$

$299 : 13 =$

$343 - 24 =$

$13 \cdot 16 =$

$76 : 4 =$

$153 + 222 =$

$380 - 12 =$

$381 - 308 =$

$208 : 2 =$

$315 - 72 =$

$18 \cdot 11 =$

$47 \cdot 7 =$

$215 + 173 =$

$19 \cdot 13 =$

$393 - 144 =$

$18 \cdot 22 =$

$172 + 112 =$

$354 - 214 =$

$154 + 241 =$

$14 + 242 =$

$225 + 132 =$

$51 + 320 =$

$155 + 234 =$

$327 + 53 =$

$27 \cdot 11 =$

$387 : 3 =$

$361 : 19 =$

$114 - 26 =$

$334 - 19 =$

$8 \cdot 42 =$

$299 : 23 =$

$218 : 2 =$

$351 : 3 =$

$2 \cdot 136 =$

$248 : 8 =$

$11 \cdot 23 =$

$243 - 75 =$

$328 : 8 =$

$254 : 2 =$

$50 : 5 =$

$399 : 7 =$

$324 - 69 =$

$163 + 182 =$

$167 + 178 =$

$183 - 154 =$

$371 : 7 =$

$314 - 291 =$

$140 + 173 =$

$392 : 4 =$

$165 : 15 =$

$284 - 47 =$

$362 - 137 =$

$20 \cdot 14 =$

$283 - 262 =$

$382 : 2 =$

$11 + 36 =$

$148 : 2 =$

$139 + 131 =$

$325 : 5 =$

$383 - 64 =$

$7 \cdot 37 =$

$361 + 25 =$

$311 - 257 =$

$256 - 92 =$

$114 + 223 =$

$15 \cdot 14 =$

$11 \cdot 23 =$

$230 : 10 =$

$14 \cdot 22 =$

$22 \cdot 15 =$

$15 \cdot 17 =$

$304 : 19 =$

$76 + 242 =$

$290 : 2 =$

$215 + 161 =$

$9 \cdot 40 =$

$293 - 254 =$

$277 - 122 =$

$123 : 3 =$

$315 - 129 =$

$248 : 4 =$

$15 \cdot 14 =$

$248 - 118 =$

$184 + 189 =$

$262 - 127 =$

$160 + 229 =$

$18 \cdot 15 =$

$400 - 196 =$

$360 : 6 =$

$102 : 2 =$

$10 \cdot 22 =$

$172 + 208 =$

$16 \cdot 13 =$

$162 + 237 =$

$286 : 11 =$

$331 - 212 =$

$138 : 3 =$

$391 - 104 =$

$219 - 56 =$

$18 \cdot 12 =$

$288 : 24 =$

$233 - 75 =$

$363 : 11 =$

$125 : 5 =$

$974 - 783 =$

$94 : 2 =$

$214 - 196 =$

$20 \cdot 11 =$

$160 : 10 =$

$215 - 103 =$

$33 + 85 =$

$39 \cdot 6 =$

$21 \cdot 11 =$

$288 : 18 =$

$190 + 154 =$

$75 + 192 =$

$286 - 251 =$

$213 : 3 =$

$372 : 2 =$

$386 - 95 =$

$117 - 31 =$

$272 + 126 =$

$26 \cdot 11 =$

$10 \cdot 23 =$

$226 - 203 =$

$258 - 22 =$

$63 + 318 =$

$223 + 130 =$

$357 - 90 =$

$17 \cdot 23 =$

$14 \cdot 18 =$

$253 : 11 =$

$121 + 188 =$

$348 - 119 =$

$347 - 133 =$

$252 - 137 =$

$341 - 186 =$

$190 + 109 =$

$156 - 69 =$

$24 \cdot 15 =$

$236 + 66 =$

$184 : 8 =$

$258 - 25 =$

$334 - 123 =$

$20 \cdot 16 =$

$263 - 249 =$

$197 + 159 =$

$5 \cdot 37 =$

$223 + 54 =$

$25 \cdot 10 =$

$162 + 137 =$

$122 - 19 =$

$123 + 157 =$

$174 + 167 =$

$338 : 2 =$

$267 - 29 =$

$188 : 4 =$

$324 - 314 =$

$314 - 84 =$

$136 - 92 =$

$12 \cdot 22 =$

$264 : 22 =$

$382 - 95 =$

$238 - 37 =$

$175 + 83 =$

$10 \cdot 31 =$

$321 - 250 =$

$44 + 335 =$

$346 : 2 =$

$148 : 2 =$

$324 - 81 =$

$159 + 145 =$

$335 - 66 =$

$395 : 5 =$

