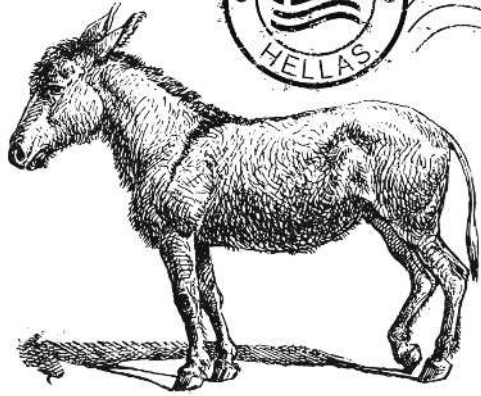
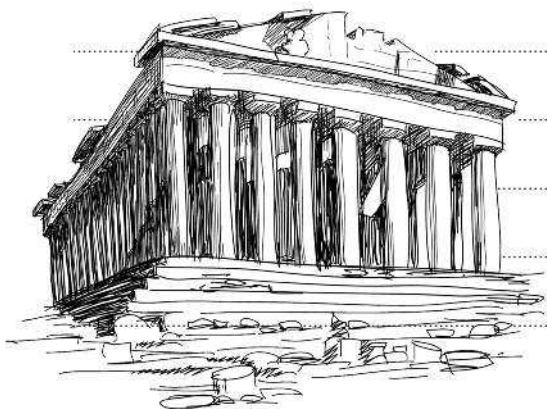


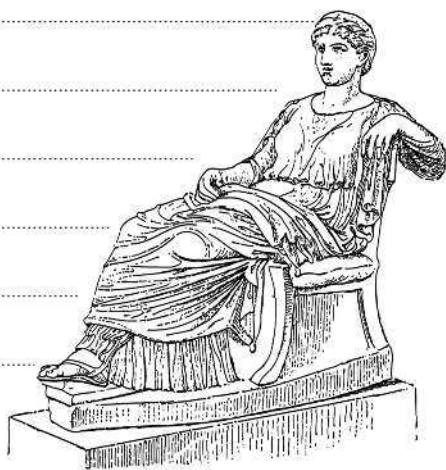
Welcome
to
GREECE



Four horizontal dotted lines for writing.



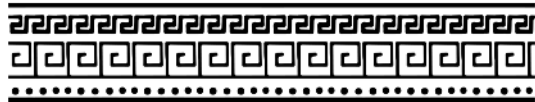


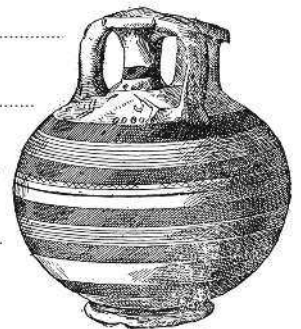
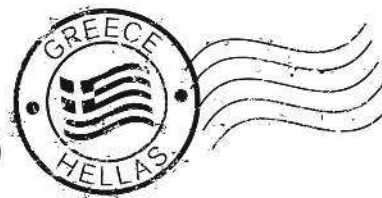






A series of horizontal dotted lines for writing, spanning the width of the page below the stamp.

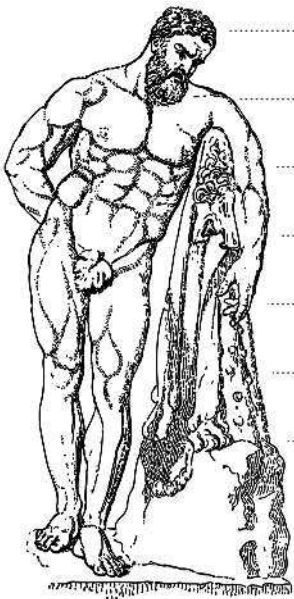
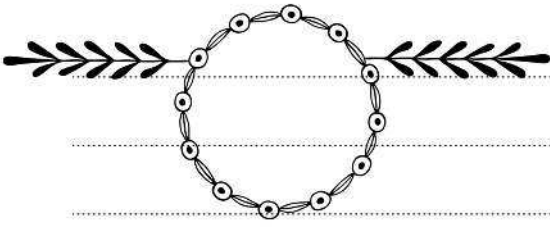






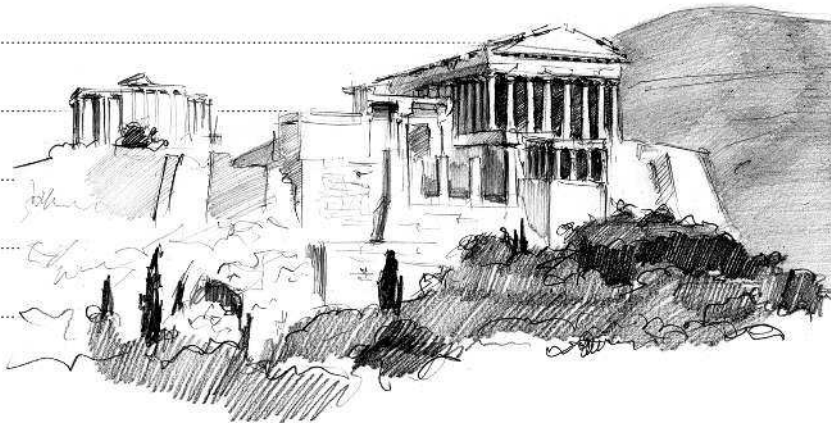
Welcome
to
GREECE







GREECE





A series of horizontal dotted lines spanning the width of the page, providing a guide for handwriting practice. The lines are evenly spaced and extend from the left margin to the right edge of the page.

A series of horizontal dotted lines for handwriting practice, consisting of 20 lines spaced evenly down the page.

