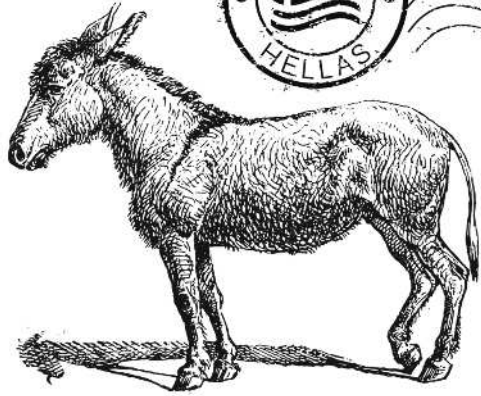
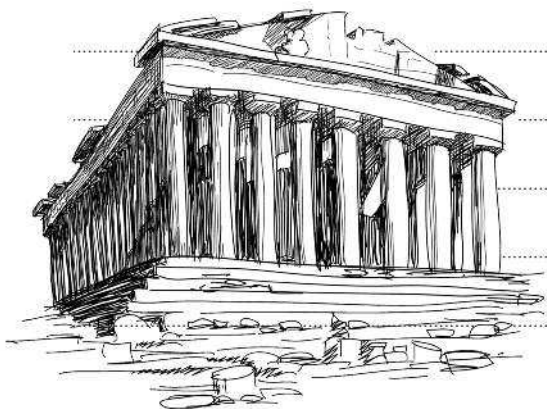


Welcome  
to  
**GREECE**



Four horizontal dotted lines for writing.

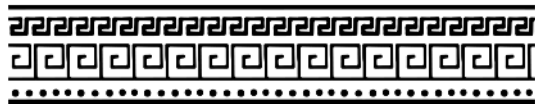


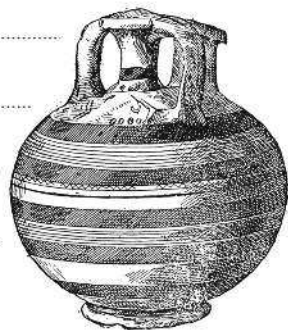










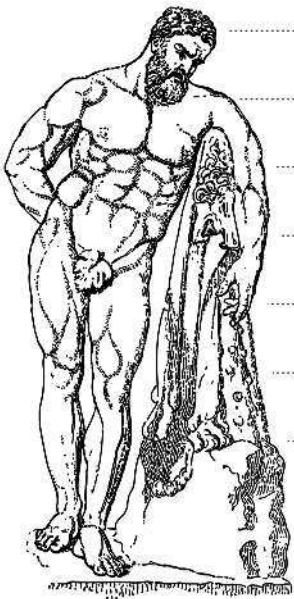
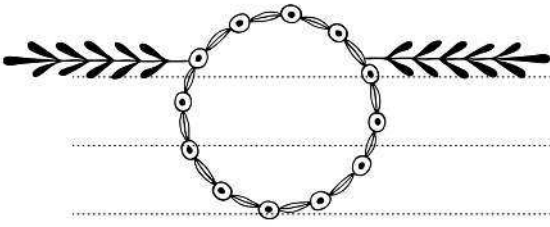






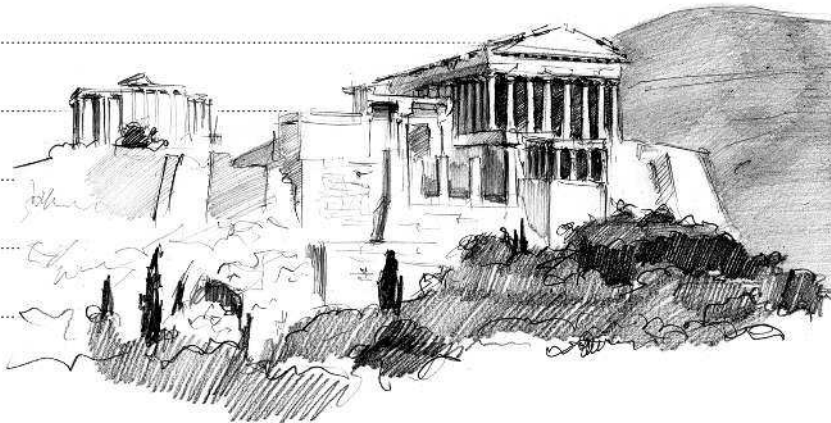
Welcome  
to  
**GREECE**







GREECE





A series of horizontal dotted lines spanning the width of the page, providing a guide for handwriting practice. The lines are evenly spaced and extend from the left margin to the right edge of the page.

Handwriting practice lines consisting of multiple horizontal dotted lines on a white background.

